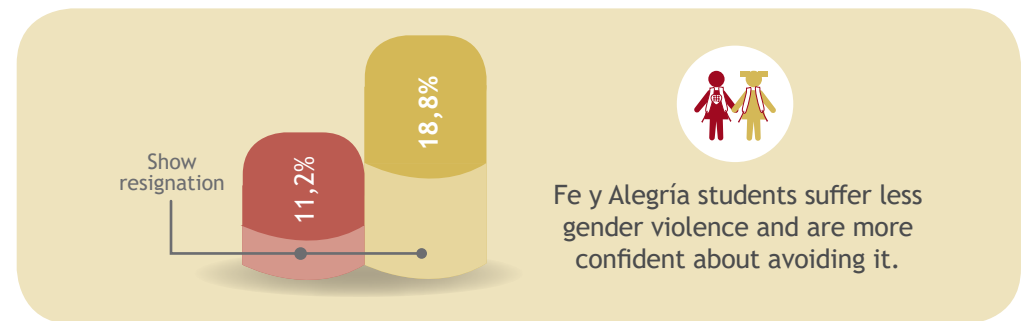
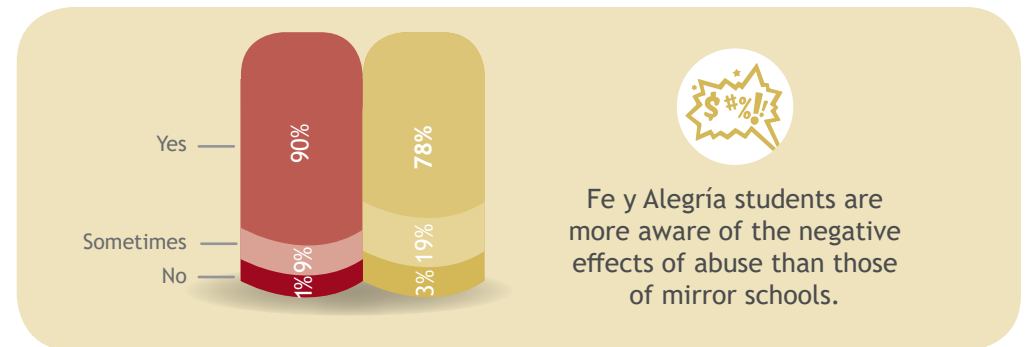
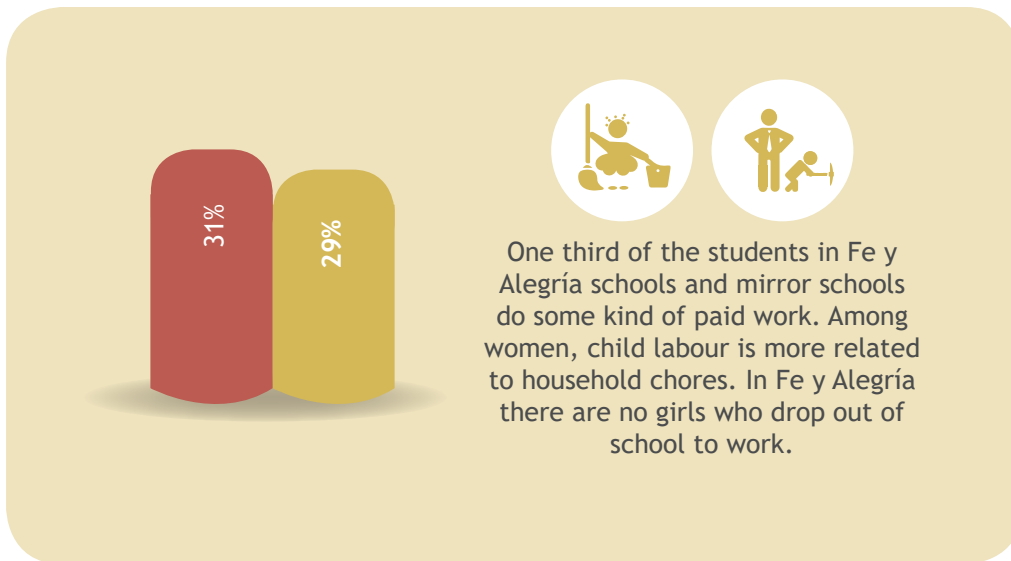
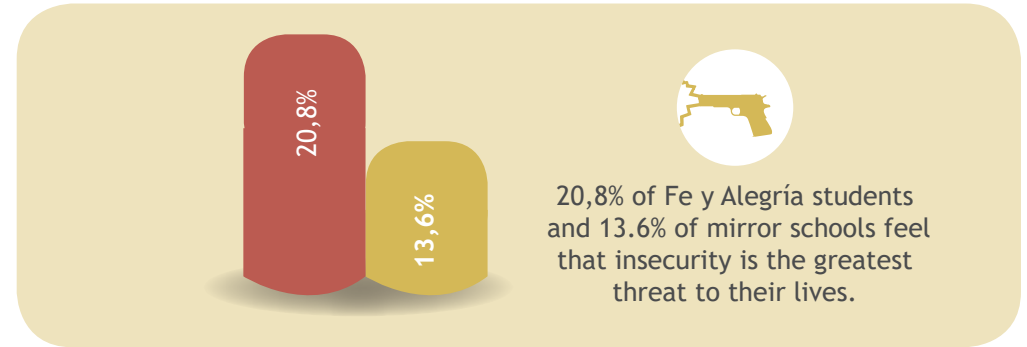
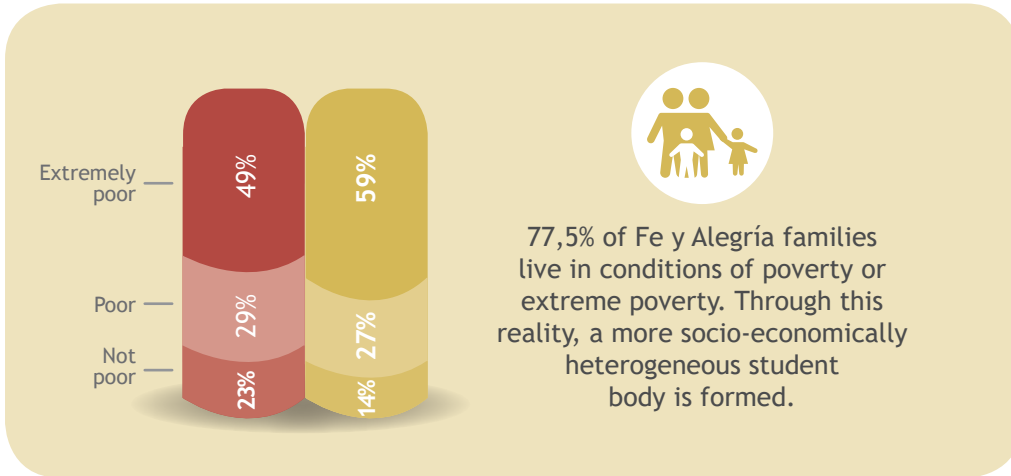
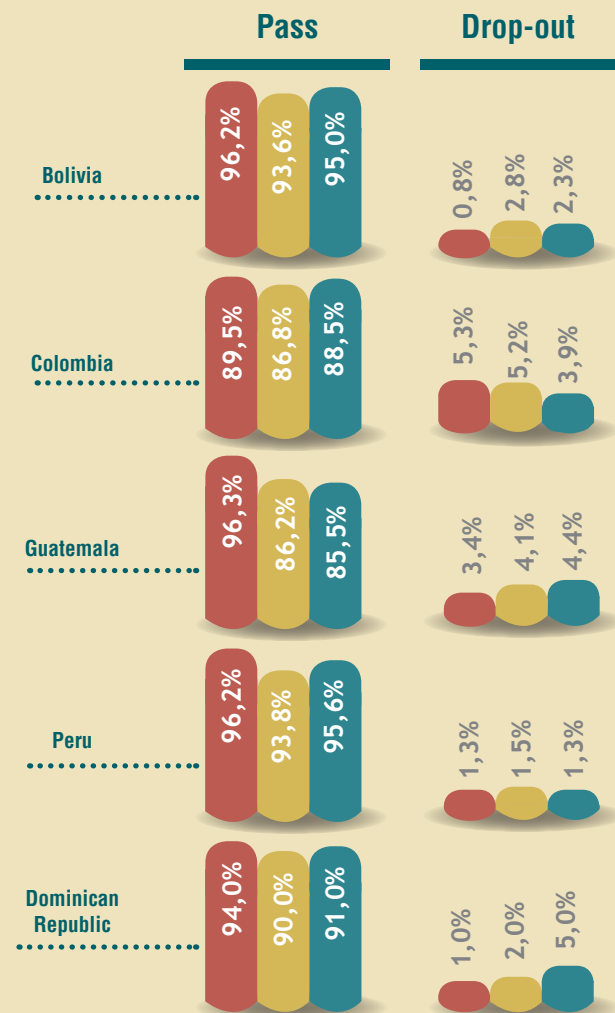




Fe y Alegría's impact on students and their families

Does Fe y Alegría work with the poorest and most vulnerable students, generating opportunities for access, permanence and completion?





The pass rate in Fe y Alegría is, on average, 4 points higher than the schools in its surroundings. School drop-out and repetition are lower in Fe y Alegría.

● Fe y Alegría ● Mirror schools ● National average

Does Fe y Alegría train citizens with critical awareness and social commitment?



They are able to analyze problems and seek solutions.



They have an opinion



They participate in the running of the centre

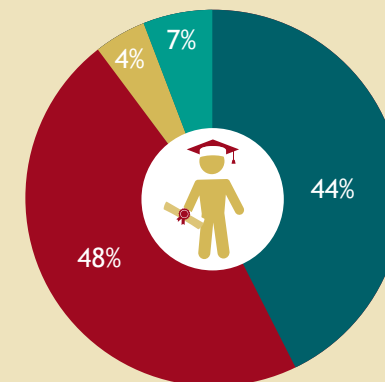


They lead extra-curricular spaces

Fe y Alegría students show greater awareness of their environment, ability to analyze social problems and influence concerns in their environment.

● Fe y Alegría ● Mirror schools

Does Fe y Alegría increase its students' social mobility?



80% of Fe y Alegría graduates claim to have more opportunities to have a better life than their parents, including access to higher education.

92% have expectations of continuing to study even if that also implies working.

● Study ● Study and work
● Work ● Military service

